



Daresbury Parish Plan *2007*

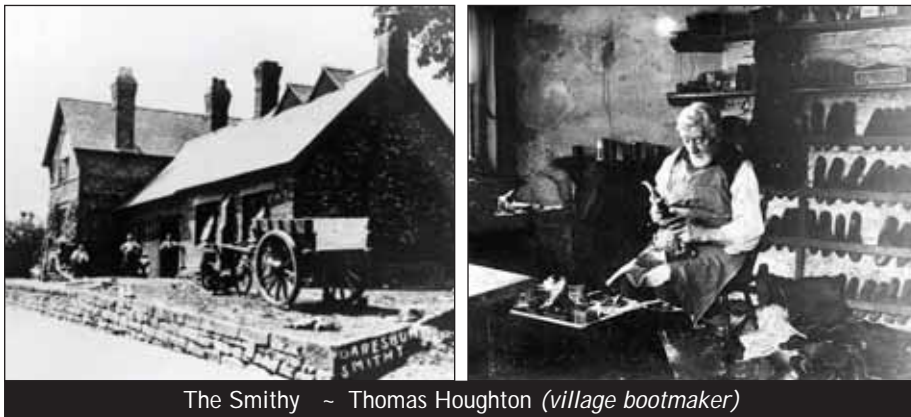


Daresbury Parish Plan

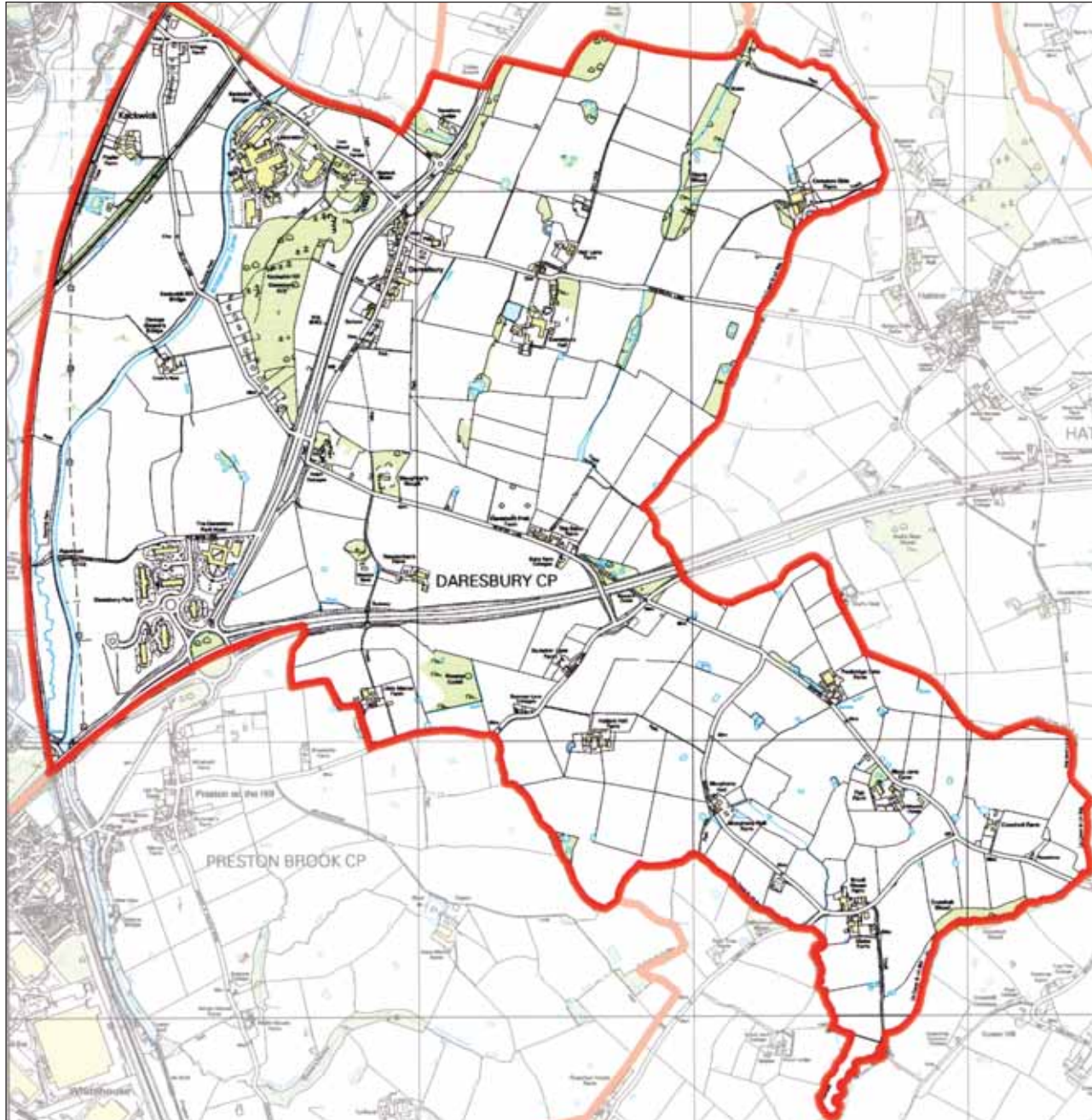
Daresbury Parish Plan 2007

Contents

1. Introduction	1
2. Daresbury Past and Present	1
3. Questionnaire Results Summary	5
4. Action Plan	10
5. From Plans to Action	12
References	14



Daresbury Parish Plan



Map of Daresbury Parish

This map is reproduced from Ordnance Survey material with the permission of Ordnance Survey on behalf of the Controller of Her Majesty's Stationery Office.
© Crown Copyright
Licence 100046679

1. Introduction to the Parish Plan

What is a Parish Plan?

A Parish Plan is a statement of how the community sees itself developing over the next few years. It reflects the views of all the residents, identifies what people value in the village and spells out how residents want the village to develop, to overcome any problems and to take advantage of opportunities.

In 2004 the Parish Council successfully applied for a grant under the Countryside Agency "Vital Villages" initiative to enable a parish plan for Daresbury to be produced.

A Steering Group of volunteers from Daresbury was formed and these volunteers have been responsible for collecting the views of Daresbury residents, collating the results of consultation and producing this parish plan.

The aim of all the work of the Steering Group has been to ensure views expressed by residents are accurately represented in this document.

Who has been consulted?

The simple answer is everyone in Daresbury has been asked for their views and opinions. There have been a number of steps involved in gathering the views of Daresbury residents:

- creation of detailed questionnaire covering broad themes affecting village life.
- distribution of the questionnaire to every household in Daresbury.
- collection of completed questionnaires and collation of results.
- identification of the most common views expressed by residents.
- creation of an action plan.



School Weather Vane ~ Well Cover at Lewis Carroll birthplace site

- production of the Parish Plan and supporting statistical report.

Can I see the full results from the consultation?

Yes. A separate statistical report showing all the results from the questionnaire has been produced and is available from the Clerk to Daresbury Parish Council or at www.daresburyvillage.org.uk.

Thanks from Daresbury Parish Council

This Parish Plan is the result of nearly two years' work. Daresbury Parish Council would like to thank everyone who has contributed in any way and particularly thanks the members of the Steering Group who have co-ordinated the work. They have worked tirelessly over many months to ensure the details of the plan truly reflect the views of Daresbury residents.

Whilst publication of this document is a significant step it is only the beginning.

The action plan expresses wishes of residents, but to make them a reality, volunteers will be needed to look at the detail and work with other agencies and relevant authorities.

If you are interested in volunteering to help make these plans a reality, please read Section 5 "From Plans to Action" to see how you can be involved.

2. Daresbury Past and Present

Daresbury is situated in North Cheshire, 7 km SW of Warrington and 9 km NE of Frodsham. It was always part of Cheshire until the formation of Unitary Authorities when it became part of Halton Borough. The parish is roughly divided in half by the M56. It is bounded on the west side by the railway. There is an OS benchmark on Chester Road near the school. Geologically, we are on New Red



Morphany Lane pond ~ Bridgewater Canal

Daresbury Parish Plan

Sandstone from the Triassic period. The cutting, in Red Brow Lane, is a Regionally Important Geological Site (RIGS). The altitude is mainly between 50 and 70 metres but the Bridgewater Canal follows the 25 metre contour. Most of the land is gently undulating fields with copses and some old hedges.

History of the Parish

For such a small village, Daresbury has a very long and interesting history. Our parish has seen major changes. Until the early 19th century it was a small almost self-sufficient agricultural community with cobbled streets and cart-tracks and few links to the outside world. Today, at the beginning of the 21st century there is a canal, a railway, a bypass and a motorway and a world renowned scientific research facility (Daresbury Laboratory).

The name Daresbury (variously spelt) means "*Deor's Stronghold*", from the Old English personal name *Deor* and *burh*. It is thought that the name is of exceptional status as *burh* place names are rare in this part of Cheshire. So, Daresbury may have been important as early as the 10th century although it was not mentioned in The Domesday Book. The name Keckwick is probably a combination of an Old Scandinavian personal name and *wic* a settlement e.g. a dairy farm.

The manor of Daresbury, which was held under the Barony of Halton, passed by successive heiresses from the family of Daresbury (named after the parish) to those of Norrey and Daniell in 1344. Bagshaw's Directory of 1850 states that "Daresbury chapelry, township, and small village stands on pleasantly elevated ground, commanding fine prospects of the surrounding country...it contains 599 Cheshire acres, mostly a sandy soil and in 1841 there were 27 houses and 184 inhabitants". The population seems to have stayed relatively stable as in 1801 the population was 134 and in 1831 it was 143. Now it is about 200 in 100 dwellings.

The school was founded by Richard Rider of Preston (Brook) in 1600 who gave £10 "so that an honest and able schoolmaster should for ever be kept to teach grammar for the good of the resident children" ! Moore children used to walk up to Daresbury School every day until Moore School was built. The "Alice" weather vane (adopted as our Parish Plan logo) on the school was crafted by the village blacksmith, Colin Dale. The school has recently (Oct '05) received a glowing OFSTED report and is oversubscribed. It is attended by 101 children in 4 mixed-age classes. The school was extended in 2001.

Daresbury Church

A Christian church has stood on the site since the 12th century when a chapelry was founded by Norton Priory. The original church may have been plastered or limewashed, hence its local name, "the White Church of Cheshire". After the Reformation in the 16th century, when monastic property was redistributed, All Saints came under Christ Church College, Oxford, a link which lasted until the late 19th century. The first stone church was built in about 1550 according to the worn figures inscribed on the tower. The tower was restored and is the only part of the original 16th century church remaining. There is a peal of 8 bells. Some of the bells date from the 18th century. The present church was built in gothic style in the 1870s. The names of some local families, who have been benefactors of the church can be seen on memorial tablets and windows, such as Greenall, Rylands, Chadwick, Heron, Milner, Houghton and Okell. The church has wonderful carved wood screens, lectern and pulpit. The font inside is late 19th century and has a beautiful wooden cover, donated by the late Lady Greenall. The font outside is Tudor and was used to baptise Lewis Carroll. The War Memorial in the churchyard commemorates war dead from both the First and Second World Wars. Several local families in Daresbury and Moore lost loved ones.



The Cottage ~ Former Daresbury House & Hill Crest Cottage



Oaklands (site of Daresbury Park Hotel) ~ Morphy Hall (demolished 1937)

Daresbury Parish Plan

The Daniell chapel contains the famous Lewis Carroll Memorial Window. His fans from around the world contributed to a memorial fund, resulting in this exceptional stained glass window. It was designed by Geoffrey Webb and depicts a nativity scene, images from Tenniel's illustrations of the "Alice" books and symbolic panels illustrating facets of Carroll's life, such as the wheat sheaf of Cheshire, the arms of Rugby school and mathematical instruments; Carroll became an Oxford don, teaching mathematics.

Lewis Carroll (Charles Lutwidge Dodgson), author of *"Alice's Adventures in Wonderland"* and several other children's books, was born at Newton-by-Daresbury in 1832 in the parsonage which was then on Morphany Lane. The house burned down in 1833 and is today commemorated by a plaque. Who knows, maybe he was influenced as a young boy by the natural world of cornfields, hedges, woods, and wild animals, for there are certainly plenty of rabbits! Perhaps the acrostic, whose initial letters spell Daresbury, in the bellringers' chamber in the belfry in the church, may have stimulated his imagination and his fondness for puzzles such as acrostics in his later writings. There is a proposal for the north porch of the church to be extended to be used for a Lewis Carroll exhibition.

The Tithe Map of 1844 shows the "Turnpike Road" (an old Roman road from Chester to Warrington), church, pub (site of an old coaching inn), school, smithy, cottages and post office all in the village. At Daresbury Delph there was a quarry, probably still in use then (and the source of sandstone for the church tower). The townships of Daresbury, Newton, Keckwick, "Moor", and Acton Grange are shown, all in the Parish of Runcorn. An old wood with a quarry (the present Daresbury Firs) is shown with its "foot road" – the current footpath. About a hundred years ago most of the trees died, allegedly due to the foul fumes from Widnes and Runcorn. Today we enjoy much better air quality unless the wind is from the northwest!



War Memorial ~ Memorial Window ~ Font

Trades, village memories, etc

Newton Cross once stood on common land at Newton-by-Daresbury. Local legend held that if the stones were removed a curse would fall on the farm and the cows' milk would dry up. By the 18th century even though the cross was reduced to a few stones the belief persisted and rather than disturb the stones the farmer would plough around them. The "curse" was apparently lifted when, during construction of the M56, the stones were temporarily removed!

Petty sessions used to be held on the last Tuesday of the month in the Sessions House, next to the Ring o' Bells. The inscription reads *"This building has been erected for the Cheshire meeting of the magistrates' court AD 1841. The judge is condemned when the guilty is acquitted"*. We hope that also applies if the innocent are mistakenly condemned!

Village Farm used to be a dairy farm owned by the Wright family and was famous for breeding shire horses. Jasmine Cottage used to be a church house where the church curate lived.

The site of the present Daresbury House has an interesting history. After the parsonage on Morphany Lane burned down, a new vicarage was built opposite the school (adjoining Hillcrest Cottage). When this vicarage was superseded by the present one, the old one was used by the Land Girls during the Second World War.

Apparently the lady (Dolly Woodhouse) who used to live at Well Cottage didn't like the noise of the village pump caused by cyclists pumping the well for water to have a drink, so she had the pump removed and the well paved over.



Daresbury Church ~ Sessions House

Daresbury Parish Plan

The anvil, which used to sit outside Duttons' Lawnmower shop (the former village smithy), was stolen a few years ago. The Old Post Office ceased to operate in 1980. It had also been the village grocery and bakery. There are still meat hooks in the ceiling. Cobbler's Cottage was the home of the village shoemaker.

Many houses were part of Gilbert Greenall's estate and several have a stone inscribed *GG 1896*. Many properties were sold on the death of the then Lady Daresbury in 1942, with a clause in the deeds restricting the sale of alcohol!

The Bridgewater Canal

The canal was only the second to be opened in Britain (after the Sankey Canal). Francis Egerton, 3rd Duke of Bridgewater provided the finance for the building of the canal, which was opened, from Worsley to Manchester in 1761. James Brindley supervised its construction. By 1773 it had been extended through Lymm to Preston Brook. The canal was extremely busy, night and day, carrying coal, farm produce, foodstuffs, raw materials, oil, chemicals, metals, manure, night soil and salt. Packet boats carried passengers and parcels between Runcorn and Manchester. Motive power for the boats was provided by mules and horses until the 1940s. The last significant commercial traffic, coal from Lancashire to the former Runcorn gas works, was in September 1962. From the 1960s it has become popular with pleasure boats and walkers and was always favoured by anglers. Its water quality is good and it supports a varied wildlife.

Daresbury Hall. In 1755 John Daniell sold the manor of Daresbury to George Heron and the Hall was built about 1760. It remained in the Heron family until 1850 when it became the property of Samuel Beckett Chadwick. In 1892 Sir Gilbert Greenall is listed as the owner. In 1955 the Hall was taken over by the National Spastics Society as a residential home with good facilities for adults suffering from cerebral palsy. Many village functions were held in the Hall such as

country dances. Eventually the residents were moved to other accommodation in Halton and at present the Hall stands empty.

The Daresbury Park Hotel (formerly The Lord Daresbury Hotel) was built in 1970 on the site of "The Oaklands". This was a mansion house built, in Scottish Baronial style, for William Wright. In the first World War it served as an Auxiliary Hospital and from 1919 to 1950 as a Bluecoat School. In 1950 Greenall Whitley bought The Oaklands from the Trustees of the Warrington Bluecoat Charity and demolished it in 1970.

The Daresbury Laboratory is one of the UK's premier research institutes and the centre of a new business and innovation campus. It developed the world's first synchrotron light source, which has been used to understand the atomic and molecular structure of materials and played a key part in helping a UK researcher win a share in the 1997 Nobel prize for chemistry. It has helped researchers develop everything from new medicines to improving the taste of Cadbury's chocolate. It is the home of one of the UK's largest and fastest supercomputers and the tower once held the world's largest Van de Graaf generator. Although the synchrotron light source is due to close at the end of 2008, Daresbury Laboratory will remain a centre of excellence for scientific research. The North West Development Agency (NWDA) has granted £25.7 million to develop an International Science and Technology Park and the new Daresbury Innovation Centre will support the strong growth in science and technology businesses. In 1955, the Brooke Estate of Norton Priory sold land in Daresbury to ICI who it sold on to the Runcorn New Town Development for the building of the Daresbury Laboratory (the land had been farmed by the Morris family). The building was started in 1962 and it was officially opened in 1968. During the construction the canal was accidentally breached and several Moore residents remember the flood which ensued.



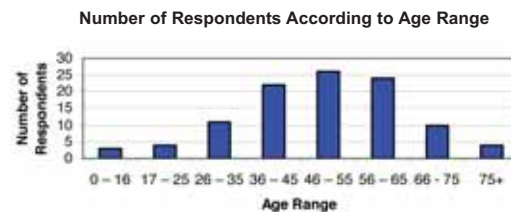
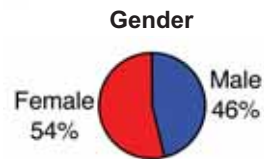
Keckwick Lane Bridge ~ Footpath through Daresbury Firs



Daresbury Hall ~ Daresbury Innovation Centre

The Present Day

The parish has the following profile:



There are several working farms (but no longer a fruit farm) and the area is still a rural parish but it has two major development sites: one at Daresbury Park with its new office park and the other at The Daresbury Science and Innovation Campus. There are probably about a dozen or more residents working in the parish, with the rest either commuting into nearby conurbations or retired. Approximately 14% of the respondents have children attending local authority schools.

Daresbury is a village inset into the Green Belt and is a conservation area. Daresbury Firs was bought by Halton BC in 1996 and both the Firs and the privately owned adjacent wood on Keckwick Hill are managed by Groundwork Mersey Valley. The wildlife in the parish includes badgers, foxes, rabbits, hedgehogs, stoats and other smaller mammals, small nesting birds, rooks, buzzards, peregrine falcons and sparrowhawks. But birds such as skylarks, starlings, owls, and greenfinches seem to be declining. The small copses on private land are mostly managed for pheasants and partridge. The majority of the farmland is laid to grass. There are many farm ponds and a couple of streams, eg the stream in Morts Wood, and part of Keckwick Brook is in Daresbury.



Dairy Farm (Fruit Farm) 1908 ~ Canal bridge in Red Brow Lane

Small businesses include Duttons' lawnmowers, the pub, the Dental Academy and the Railway Riding Stables. The church, pub and school provide the main activities and the reopening of the parish room, to provide a focus for community life, is long awaited. There has been sadly rather an abeyance of activities since the pub was extended, some years ago, despite promises by the brewery at the time of a refurbished village facility.

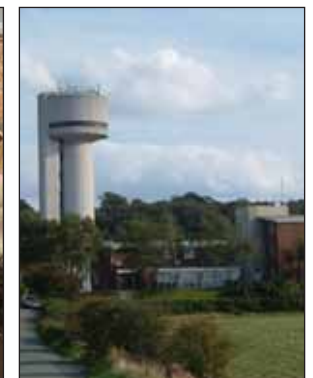
Activities in the Parish at present include church services, choir practice, bell-ringing, parish meetings, Moore and Daresbury WI (in Moore), the Playmakers, Moore and Daresbury Cricket Club, Warrington Horse Show and our main community event of the year in September: the Hatton Show. Walking is popular as we are fortunate in having many delightful footpaths, through fields, woods and beside the canal. The Moore and Daresbury Scarecrow Trail started in 2005 and last year (2006) Daresbury Primary School took part.

And finally some questions Does anyone know the present whereabouts of: the remains of Newton Cross; the stolen anvil; and the pump from the village well?

Acknowledgements

Thanks to all the local residents of Daresbury and Moore who have helped and given information eg Lilian Morris and the Moore and Daresbury Heritage Group, Dilys Heeley, Margaret Sykes, Eileen Cartwright, Alan Jones, Reverend David Felix, Tony Buckley of the Daresbury Laboratory and the staff of Warrington Museum and Library.

Edited by Lyn Goodkin (any mistakes are mine and I would be pleased to receive any comments or further information to help compile an even fuller version of our parish history!)



Newton Cross ~ Scarecrow Trail ~ Daresbury Laboratory

Daresbury Parish Plan

3. Questionnaire responses: summary by sections

After all the completed questionnaires were collected, the Steering Group went through a process of collating all the hard data. This data has been converted into percentages to make the results easy to understand.

All this hard data is published in a separate report according to the guidance of the Countryside Agency and a copy is available from the Clerk to the Parish Council or on www.daresburyvillage.org.uk

The next task for the Steering Group was to analyse this data and identify common areas of interest and concern and see if any suggestions for action emerged from the questionnaire responses.

The Daresbury parish plan questionnaire was designed to give residents an opportunity to make comments and suggestions.

Below there is a summary of the main themes and suggestions from each of the sections of the questionnaire and this is followed with an action plan based on these responses from residents.

A. Environment

- A high proportion of responses were in favour of planting trees and shrubs. Planting of trees would also reduce noise and screen unsightly science and business parks.
- The establishment of a wildlife area was welcomed.
- The footpaths that exist were considered adequate, however, several commented on need for footpath from Daresbury to Hatton. There was an identified lack of pavements away from the village.
- Most felt that home insulation and other energy saving methods should be

encouraged.

- The majority also wanted to see the use of renewable energy sources promoted.
- Hedge and grass cutting and weed control were generally considered adequate, although some felt there should be better maintenance and monitoring of these services.
- Light pollution is considered to be a nuisance. The A56, golf driving range, Daresbury Park, Daresbury labs and Science Park and various security lights in and around village were all identified as sources of pollution.
- Noise is also considered a nuisance. Road noise from A56 and M56 is the main problem. Vans, trailers and buses traversing speed bumps in the village were mentioned along with taxi pick up at Pub and the increasing volume of air traffic noise.
- Fly tipping was identified as a major nuisance. It was mentioned as occurring in all lay-bys and spare ground in the parish and in most lanes. Mention was also made that roadside litter is left too long before removal.
- Speed bumps and streetlights are seen as spoiling the character of the village.
- Homosexual soliciting at night around Summer, Morphany and Newton Lanes are particularly unwelcome.
- The Creamfields festival was unwanted by many respondents.
- Travellers were seen as causing some nuisance.
- Most would like to see environmentally friendly practices promoted.
- Many would like the village well to be reinstated although cost and safety fears were raised.



Lewis Carroll birthplace ~ village trees in winter



Well Cottage ~ the site of the Old Well

- Most would like to see bat and bird boxes made available for new and existing buildings.
- Many would like a wildlife and habitat audit to be carried out, again the cost implication raised.

B. Access to Services and Transport

- A majority has adequate access to doctor, dentist and pharmacist. Low numbers of those responding use health visitors.
- Just under a half of the respondents use a library at present and in many cases this was outside the borough.
- Low numbers have milk and newspapers delivered. For milk it could be the higher price, for newspapers it could be lack of information as to availability of service.
- A very high percentage state they would use a farm shop and this seems worth pursuing.
- Provision of another retail outlet does not seem worth pursuing considering low level of interest.
- A high percentage is satisfied with postal deliveries and collections.
- A high percentage states that refuse collection is adequate although just over half of respondents state that collection of waste paper is inadequate. This was highly dependent on area.
- A high percentage stated that provision for recycling is inadequate.
- There is a high degree of car usage, and limited public transport usage for all activities. Some travel by foot and by bike.
- A high percentage stated that they do not need to use public transport.
- The vast majority does not need help from others for daily tasks.



- The major centre for services was Stockton Heath, and then Warrington. Only very low numbers make use of other centres.

C. Education

- There is low number of children in the parish of which approximately half attend local authority schools.
- A high percentage stated it was important that there is a school in Daresbury parish.
- A high percentage wished to see priority for enrolment at Daresbury School be given to local residents.
- There was little response to questions related to the provision for secondary or post-16 full-time access.
- Opinion was divided on the need for provision for adult education using a centre in the parish.

D. Community Activities

- The main social activities that people are involved in within Daresbury parish are the local pub, walking and cycling.
- The main social activities that people are involved in outside Daresbury parish are going to the theatre and cinema, dining out, using leisure centres and other sporting activities.
- The majority offered no opinion regarding whether the parish would benefit from more community activities. Of those answering yes/no marginally more people felt there would be a benefit to the community. Poor promotion of existing community activities was mentioned.
- Almost half of the respondents indicated that they attend the Hatton Show. Of these many felt the Hatton Show was good for the parish and should be



Daresbury Parish Plan

encouraged and supported.

- A large number of responses was received in favour of a 'Welcome Pack' and there were comments that it would also be useful to existing residents.
- Most were in favour of being kept informed regarding parish matters. The preferred methods were by newsletter and through a website. The potential for the use of e-mail was also highlighted.
- A significant majority has access to the Internet at home.

E. Roads and Traffic

- The roads are generally considered to be in good condition; however, potholes in Delph, Newton, Higher, Morphany, Summer and Grimsditch Lanes and Chester Road were highlighted.
- The prevailing view is that road signs are generally correctly sited and in good condition. Specific points made were that some road signs are in need of attention or are missing, the Keckwick Lane main railway line bridge shows the incorrect height restriction, and warning signs for horses were requested for Keckwick Lane.
- Roads are considered reasonably safe for general traffic and cyclists but unsafe for pedestrians and horses. Safe places to cross the A56 and the Chester Road in the village were requested.
- Roughly similar numbers think speed control measures are adequate/inadequate, although traffic calming is felt to be particularly needed for Delph and Keckwick Lanes. Some felt the speed bumps are not working and spoil the character of the village. Various suggestions were put forward to control the speed of traffic.

- The volume of traffic is generally deemed acceptable although, suggestions were made for access only routes and quiet lanes and other alterations to control traffic volume.
- Most think parking is not a problem. Parked cars near Chester Road/Daresbury Lane junction reduce vision turning left from Daresbury Lane into Chester Road. Chester Road and school parking is a problem to some, residents only parking was requested in the village.
- Most think existing pavements are in good condition; however, there is a lack of pavements away from the village, Delph Lane and the top of Keckwick Lane were singled out as needing pavements and several would like to see a footpath/pavement from Daresbury to Hatton.
- Most think street lighting is adequate, although concern was raised about the style of lights not being in-keeping with the village character. Street lighting over the whole parish is patchy. The lack of lighting in Higher Lane and Delph Lane were specifically mentioned.

F. Development

- A resounding 'no' was received to the further development of commerce and/or industry within the parish. Similarly, employment opportunities and housing were not considered necessary.
- The majority do not wish to see affordable housing within the parish, although there was some sympathy to the needs of local families.
- There was a big response to the impact of new developments on the parish. Most were opposed to the development of commerce and housing as this would spoil the rural nature of the village and put pressure on existing services. Suggestions were made that better use should be made of existing industrial estates or brown field sites in the borough and that everything



possible must done to protect the green belt.

- The majority would value a Village Hall and were keen on developing walking (footpaths) and rural pursuits within the parish. However concerns were raised about a new building and the development of the existing parish rooms was favoured. The development of recreational areas, education and play areas received low level of support.

G. Community Safety

- Just over a third of residents suffered from crime in the parish in the past five years with just over half suffering no crime. Over half of the reported crime had occurred more than two years ago.
- The homosexual soliciting activities in and around Lewis Carroll wood and in other areas is causing concern to nearby residents.
- Half of those suffering from crime felt that the police response was within an acceptable time, although fewer thought the response was thorough and sympathetic whilst the majority of those expressing an opinion felt that the response was ineffective.
- Comments were made that the police appeared to lack interest in dealing with the crime.
- Various comments were also made concerning the lack of police presence and that it would be reassuring to see a police officer in Daresbury once in a while.

H. Other Comments

- Major concerns were expressed about the Creamfields festival.
- There were some comments that Daresbury is largely ignored by Halton BC particularly from residents further away from the centre.

- Concerns also about
 - travellers.
 - homosexual soliciting activity.
 - maintaining the quiet, rural nature of village.
 - speed bumps (some for, some against, some suggest redesigning) and speeding traffic.
 - school parking.
 - any developments spoiling the character of village.
- An after school club, connected with Daresbury Primary School was requested.
- The A56 is seen as isolating Delph Lane residents from the village.
- The promotion of environmentally sound developments eg green roofs on new buildings would be welcomed.
- The 'Walks around Daresbury' leaflet produced by Halton BC was welcomed.
- There was support for a greater sense of village community with improved social activities.
- Community Heritage/Local History awareness could be promoted more.
- Daresbury residents appear to have much more affinity with Warrington than Halton. Warrington services are used more than Halton. Warrington secondary schools have a better reputation than those in Halton.



The Vicarage ~ Church Interior



Cheshire Cat on Village Farm ~ Ivy Cottages, Delph Lane

Daresbury Parish Plan

4. Action Plan

The timescale given for each action is indicative in terms of ease and possible length of time needed to start the required work. There will obviously be the need for ongoing actions in some areas that will be dependent on the number of volunteers.

Section	Actions	Timescale (Short, medium or long term)	Partners to consult or work with
Environment	Planting of small shrubs and tubs in the village	Short	Halton BC Daresbury PC North West Development Agency (NWDA)
	Creation and distribution of environmental information, including promotion of environmentally friendly practices, energy saving methods and use of renewable energy sources	Short	Environment Agency Halton BC Cheshire CC Groundwork Trust
	Tree planting	Short	Cheshire CC: Forestry Cheshire Biodiversity Mersey Forest Groundwork Trust Cheshire Landscape Trust
	Control of tipping	Medium	Daresbury PC Halton BC
	Lighting, speed bumps in character with village	Medium	Daresbury PC Halton BC NWDA
	Control of noise and light pollution	Medium / long	Daresbury PC Halton BC
	Wildlife area	Medium / long	Cheshire Wildlife Trust Halton BC
	Village well reinstatement	Long	Halton BC: funding search Daresbury PC Cheshire CC English Heritage NWDA
	Wildlife audit	Long	Groundwork Trust Cheshire Wildlife Trust Cheshire Biodiversity rECOrd
Services	Provide information on milk and newspaper deliveries	Short	Businesses
	Improve recycling facilities	Short	Halton BC

Daresbury Parish Plan

Section	Actions	Timescale (Short, medium or long term)	Partners to consult or work with
	Improve waste paper collection	Short	Halton BC
	Investigate provision of farm shop	Medium	Business Link Local farmers The National Farmers' Retail and Markets association www.farmshopping.net
	Provide information and encourage better use of libraries	Medium	Halton BC
	Better promotion of public transport information and improvement of public transport access to medical facilities, links to rail and air services, and access to recreation	Short/Medium/Long	Daresbury PC Halton PC
Education	Ensure residents' children have priority	Medium	Halton BC
	Provide some adult education locally for those who want it	Medium	Halton BC Adult Learning Team
	Preserve Daresbury School	Long	Daresbury PC Halton BC Daresbury School
Community Activities	Hatton Show – increase village involvement in organisation and participation	Short	The Hatton Show Society NWDA
	Welcome Pack – produce and keep up to date	Long	Daresbury PC Business sponsorship
	Parish newsletter	Long	Daresbury PC Business sponsorship
	Parish website – produce and maintain site	Long	Daresbury PC
Roads and Traffic	Report poor roads and poor signs and request extra signs	Short	Halton BC Daresbury PC
	Road safety issues: pedestrians, horses; speed control for Delph and Keckwick Lanes; road alteration suggestions; parking on Chester Road; pavements Delph, Keckwick Lanes; lighting for Higher and Delph Lanes.	Long	Daresbury PC Halton BC Highways Agency Cheshire Police
Development	Village Hall/Parish Room	Medium	Daresbury PC Cheshire CC Moore and Daresbury Heritage Group NWDA
	Footpaths and pavements eg Daresbury to Hatton	Long	Daresbury PC Cheshire CC: Countryside and Rights of Way Office
	Monitor proposed development and ensure that residents concerns are represented to relevant parties.	Long	Daresbury PC
Community Safety	Report questionnaire findings to local Police	Short	Cheshire Police

Daresbury Parish Plan

5. From Plans to Action

Firstly, a Thank You

The steering committee team would like to begin by thanking everyone for taking the time to read this document and also for your contributions to the questionnaire – your comments are very valuable.

If you have any further comments or suggestions now you have read the final plan, we would certainly be very pleased to hear from anyone out there!

As you know, the steering committee team have worked hard over the last year to produce this plan. We have all found it a very rewarding and enjoyable way of finding out what is happening locally and we have also found that it has been a means of meeting people we did not know beforehand and making friends – an outcome which was quite unexpected for some of us!

What Comes Next?

The team has now shared the plan and its findings with the residents of our local community.

The plan has revealed that most residents in our parish are very keen to make sure the village and its surroundings remain 'the picturesque oasis' which attracted them to live here. There is no doubt that in all parts of the parish there is concern that the special character our parish has, as a rural area, is not lost.

Examples of issues important to residents revealed by the plan include –

Environmental – planting shrubs and trees, promotion of environmentally friendly practices

Access to Services – improvement of recycling facilities including waste paper collection

Community Activities – setting up a website to provide a welcome pack to newcomers, promote local events and perhaps publish a newsletter

Roads and Traffic – report poor roads, poor signage and other road safety issues

Development – addressing concerns about some of the threats to the idyllic setting in which we are fortunate to live such as thoughtless development mainly posed by the surrounding large conurbations

Community Safety – reporting issues to the local constabulary.

We now need to influence, where possible, local decision-making bodies such as Halton Borough Council. This can only be done through involvement and commitment of the local community – without this involvement, we will not be able to take the plan forward into real actions.

Here is an opportunity to make a difference to your community and change the things that concern you!

As residents, we all appreciate that producing a plan – interesting though it may be – ought not to be an end in itself. We need to put our point of view on issues that concern us, to preserve and improve the environment in which we live.

We now need other interested people to get involved in any of the areas discussed in our plan. There may also be other issues you can think of relating to your part of the parish, which are not listed! The choice is up to you, what you feel strongly about and want to get involved with.



Daresbury Church



Old Font ~ Hall Lane Farm

Daresbury Parish Plan

Please remember – we are a small community and we cannot take the plan further forward without the help of local people. We are looking for people who want to make a difference and ensure that there is a lasting legacy for the work so far.

We would ask that if you are interested, please:

- Consider the topics in the plan and the issues they raise
- Decide what interests you and consider whether you would be prepared to volunteer to help working on a project
- The level of commitment and time you are able to give is up to you – any help is appreciated and some projects can be relatively short term.

Help is Available!

The Parish Council is very keen to support anyone wanting to get involved. In fact, the Council itself is always on the look out for new members with an interest in the community.

How to Volunteer

The Steering Committee team, supported by the Parish Council are planning a small event to launch the Parish Plan.

This event will be an opportunity to learn more about what's happening in our community so please come along! For those who are interested, there will also be the chance to find out more about how to become involved!

Please look out for further announcements from us about the launch event. In the meantime, if you would like to get involved sooner, please feel free to contact any member of the Steering Committee or the Parish Council.

Please remember – without your help, we will not be able to make further progress – but together we can make some changes, no matter how small. Please take this opportunity to work with us to protect and enhance our surroundings and local community.

Members of the Parish Plan Steering Committee

Eleanor Brittain
David Felix
Alan Goodkin
Lyn Goodkin
Pam Harbron
Roland Harbron
Frances Hough
Ian Ireland
Geoff Owen

We would like to thank Ged Simpson and Peter Webb for their guidance through the process of production of this plan.



Daresbury Parish Plan

References

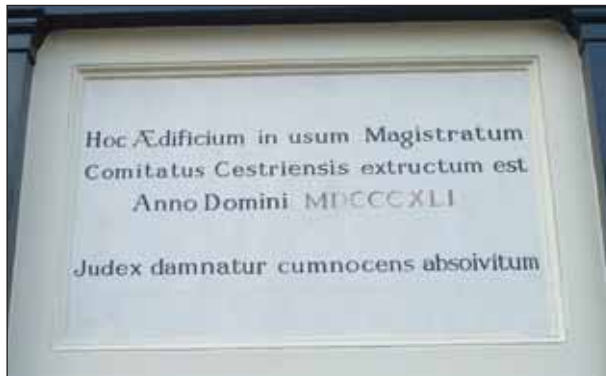
Bagshaw's Directory of 1850.

Daresbury Village Pack (Warrington Library)

The Place Names of Cheshire part II, by J.Mc N. Dodgson, Cambridge University Press, 1970

The Cheshire Village Book, Cheshire Federation of Women's Institutes, 1990

Photos taken inside the church reproduced here with permission from the PCC



School Mosaic ~ Sessions House motto



Lewis Carroll windows

